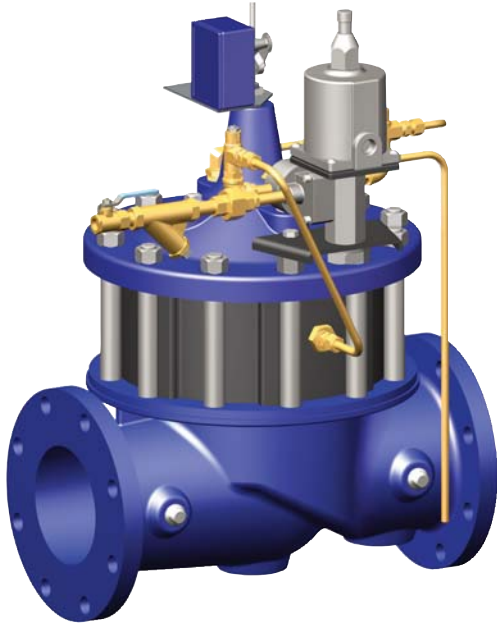


Deep Well Pump Control Valve



- Prevent Surges in Pipelines
- Simple Hydraulic Operation
- Adjustable Opening and Closing Speeds
- Solenoid Control Can Be Operated Manually
- Proven Reliable Design

The Cla-Val Model 61-02/661-02 Deep Well Pump Control Valve is designed to protect pipelines from surges caused by the starting and stopping of deep well pumps. This is a hydraulically operated diaphragm valve which is controlled by a solenoid pilot valve. Separate adjustable flow control valves in the pilot system regulate the opening and closing rates. A limit switch on the valve stem serves as an electrical interlock between the valve and the pump motor.

The operation of the valve is completely automatic and controlled by the solenoid valve. With the pump off, the valve is wide open. When the pump is started, the solenoid is energized and the valve begins to close slowly, discharging air and the initial rush of sand and water from the pump column to atmosphere. As the valve closes the pump output is gradually diverted into the main line, preventing the development of a starting surge.

When it is time to shut-off the pump, the solenoid is de-energized. The pump continues to run while the pump control valve opens slowly, diverting pump output to atmosphere. As pump pressure gradually decreases, the main line check valve closes slowly, preventing shock or slam during the pump stopping cycle. When the pump control valve is wide open, the limit switch assembly releases the pump starter and the pump stops.

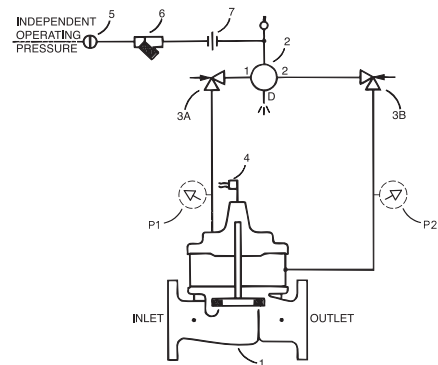
Schematic Diagram

| Item | Description |
|------|-----------------------------|
| 1 | Powertrol (Main Valve) |
| 2 | CSM11-A2-2 Solenoid Control |
| 3 | CV Flow Control |
| 4 | X105LOW Switch Assembly |
| 5 | CK (Isolation Valve) |
| 6 | X43 "Y" Strainer |
| 7 | Union |

Item Description

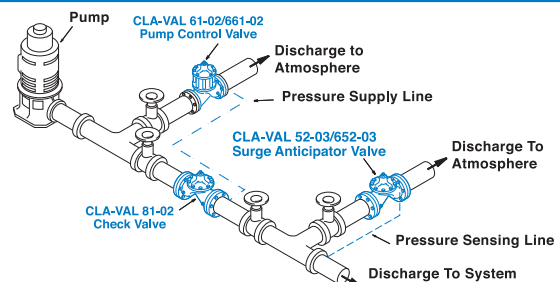
| | |
|---|---------------------|
| P | X141 Pressure Gauge |
|---|---------------------|

Note: For main valve option descriptions, refer to 100-02 (61-02) or 100-21 (661-02) Technical Data Sheets.

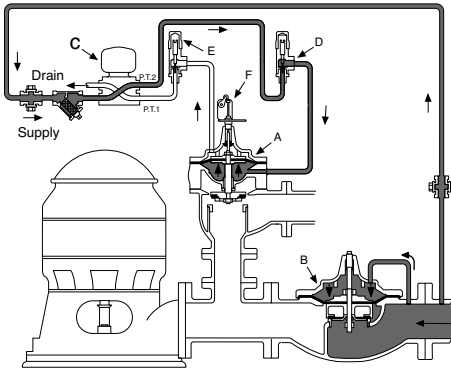


Typical Installation

Install Model 61-02/661-02 valve as shown. Use a minimum of 1/2" tubing to connect operating pressure connection of the valve to the system side of check valve. Flexible conduit should be used for electrical connections to the solenoid control and the limit switch assembly. A Model 52-02/652-03 Surge Anticipator is recommended for power failure and surge protection.

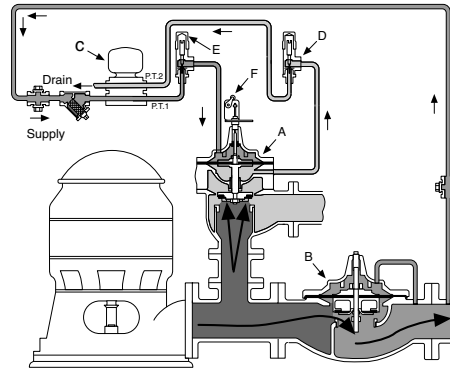


Sequence Of Operation



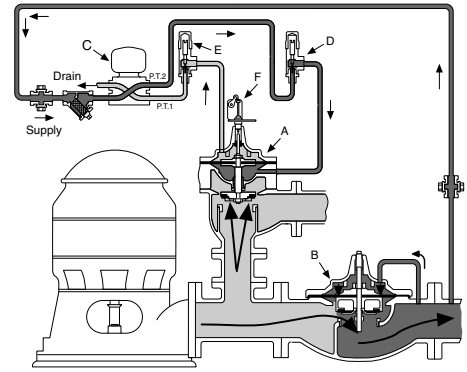
Pump Off...

With pump off, static line pressure holds the main line check valve "B" closed. Line pressure is transmitted through solenoid control "C" and speed control "D" to the lower chamber of valve "A". Upper chamber of pump control valve "A" is vented to atmosphere so valve "A" is held wide open.



Starting Cycle...

Starting switch closes, pump starts, solenoid "C" energizes and shifts, allowing line pressure to flow into upper chamber of valve "A" through solenoid control "C" and opening speed control "E". Closing speed of valve "A" is controlled by speed control "D" which limits the rate fluid is relieved from under the diaphragm. As valve "A" closes, pumping pressure opens main line check valve "B", gradually permitting full flow.



Stopping Cycle...

Starting switch opens, solenoid "C" de-energizes and shifts, as pump continues to run, pump pressure flows into lower chamber of valve "A" through solenoid "C" and opening speed control "D". Pressure in upper chamber of valve "A" is relieved to atmosphere through opening speed control "E" and solenoid control "C". As valve "A" opens, flow through main line check valve "B" gradually lessens until valve "A" is wide open and the limit switch "F" shuts off the pump.

Selecting The Valve

To be effective, this valve must be sized so it relieves to atmosphere that part of the pump discharge head which is in excess of the normal system static pressure. To do this, the valve is sized to permit the full pump discharge through the valve at a pressure low enough to keep the system check valve from opening. As the pump control valve closes, the pumping pressure exceeds the system pressure and gradually flows into the system.

We recommend selecting a valve size which will have a pressure loss that is at least 10 psi less than the system static pressure. Use the flow rate which is found on the pump's flow vs discharge pressure chart. Select the flow corresponding to the system static pressure, less 10 psi.

Determining Valve Size

1. Determine the system's static pressure (the pressure downstream of the check valve with the pump off); subtract 10 psi, this is the Design Pressure P.
2. From the pump's flow vs. discharge pressure curve, determine the flow (Q) at the Design Pressure P.
3. Using the formula, calculate the Cv.

$$Cv = \frac{Q}{\sqrt{P}}$$

4. Select the valve size from the table which has a Cv that is equal to, or greater than, the calculated Cv in step 3 above.

Example:

1. System Static Pressure with the pump off = 70 psi.
2. Determine the Design Pressure P by subtracting 10 psi (70 psi - 10 psi = 60 psi Design Pressure)
3. From the pump curve we determine that the valve must allow a flow of 800 GPM at 60 psi.
4. Using the Formula:

$$Cv = \frac{Q}{\sqrt{P}} \quad \text{Where: } Q = 800 \text{ GPM} \\ P = 60 \text{ psi (70 psi - 10 psi)}$$

$$\text{Example } Cv = \frac{800}{\sqrt{60}} = 103$$

Valve Selection Chart Cv Values

| Valve Size | Globe | | Angle | |
|------------|-------|--------|-------|--------|
| | 61-02 | 661-02 | 61-02 | 661-02 |
| 2½ | 85 | — | 101 | — |
| 3 | 115 | 62 | 139 | — |
| 4 | 200 | 136 | 240 | 135 |
| 6 | 460 | 229 | 541 | 233 |
| 8 | 770 | 480 | 990 | 545 |
| 10 | 1245 | 930 | 1575 | — |
| 12 | 1725 | 1458 | 2500 | — |
| 14 | 2300 | — | 3060 | — |
| 16 | 2940 | 2110 | 4200 | — |
| 20 | — | 3400 | — | — |
| 24 | — | 3500 | — | — |

5. From the table above the best valve choices are:

3" 61-02 Globe Pattern
4" 661-02 Globe Pattern
4" 661-02 Angle Pattern

Drain Provisions

Each time the valve opens or closes, water is discharged from the solenoid exhaust port, the amount varying with the valve size. Provisions should be made for the disposal of this water. Exhaust tube must be free of any back pressure. Provide an air gap between the solenoid exhaust tube and drain facility.

Pressure Ratings (Recommended Maximum Pressure - psi)

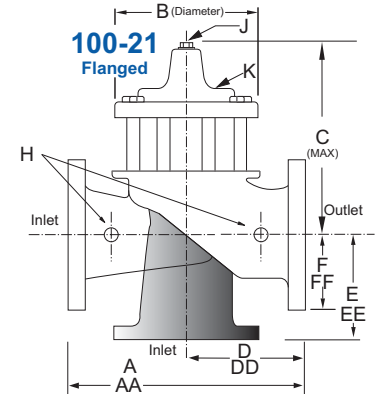
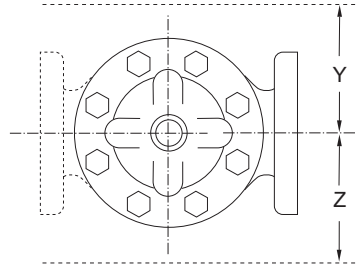
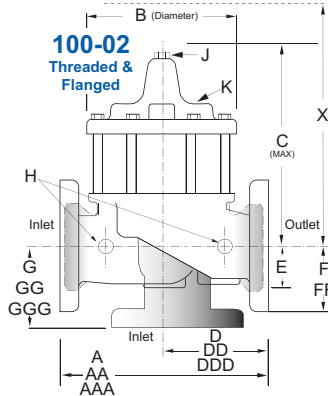
| Valve Body & Cover | | Pressure Class | | | |
|--------------------|--------------|-----------------|-----------|-----------|--------------|
| | | Flanged | | | Threaded |
| Grade | Material | ANSI Standards* | 150 Class | 300 Class | End† Details |
| ASTM A536 | Ductile Iron | B16.42 | 250 | 640 | 400 |
| ASTM A216-WCB | Cast Steel | B16.5 | 285 | 720 | 400 |
| ASTM B62 | Bronze | B16.24 | 225 | 500 | 400 |

Note: * ANSI standards are for flange dimensions only.
 Flanged valves are available faced but not drilled.
 † End Details machined to ANSI B2.1 specifications.
Valves for higher pressure are available; consult factory for details

Materials

| Component | Standard Material Combinations | | |
|--|---|--------------|--------------|
| Body & Cover | Ductile Iron | Cast Steel | Bronze |
| 100-02 Available Sizes | 2-1/2" - 24" | 2-1/2" - 16" | 2-1/2" - 16" |
| 100-21 Available Sizes | 3" - 30" | 3" - 16" | 3" - 16" |
| Disc Retainer & Diaphragm Washer | Cast Iron | Cast Steel | Bronze |
| Trim: Disc Guide, Seat & Cover Bearing | Bronze is Standard Stainless Steel is Optional | | |
| Disc | Buna-N® Rubber | | |
| Diaphragm | Nylon Reinforced Buna-N® Rubber | | |
| Stem, Nut & Spring | Stainless Steel | | |

For material options not listed, consult factory.
 Cla-Val manufactures valves in more than 50 different alloys.



61-02 Series Dimensions (Full Internal Port) (In Inches)

| Valve Size (Inches) | 2 1/2 | 3 | 4 | 6 | 8 | 10 | 12 | 14 | 16 | 18 | 20 | 24 |
|-------------------------|-------|-------|-------|-------|-------|-------|-------|-------|-------|-------|-------|-------|
| A Threaded | 11.00 | 12.50 | — | — | — | — | — | — | — | — | — | — |
| AA 150 ANSI | 11.00 | 12.00 | 15.00 | 20.00 | 25.38 | 29.75 | 34.00 | 39.00 | 41.38 | 46.00 | 52.00 | 61.50 |
| AAA 300 ANSI | 11.62 | 13.25 | 15.62 | 21.00 | 26.38 | 31.12 | 35.50 | 40.50 | 43.50 | 47.64 | 53.62 | 63.24 |
| B Dia. | 8.00 | 9.12 | 11.50 | 15.75 | 20.00 | 23.62 | 28.00 | 32.75 | 35.50 | 41.50 | 45.00 | 53.16 |
| C Max. | 10.31 | 11.19 | 14.25 | 18.44 | 21.81 | 23.38 | 29.31 | 32.12 | 35.00 | 49.43 | 53.09 | 56.50 |
| D Threaded | 5.50 | 6.25 | — | — | — | — | — | — | — | — | — | — |
| DD 150 ANSI | 5.50 | 6.00 | 7.50 | 10.00 | 12.69 | 14.88 | 17.00 | 19.50 | 20.69 | — | — | — |
| DDD 300 ANSI | 5.81 | 6.63 | 7.81 | 10.50 | 13.19 | 15.56 | 17.75 | 20.25 | 21.75 | — | — | — |
| E | 1.69 | 2.56 | 3.19 | 4.31 | 5.31 | 9.25 | 10.75 | 12.62 | 15.50 | 12.95 | 15.00 | 17.75 |
| F 150 ANSI | 3.50 | 3.75 | 4.50 | 5.50 | 6.75 | 8.00 | 9.50 | 10.50 | 11.75 | 11.75 | 16.50 | 19.25 |
| FF 300 ANSI | 3.75 | 4.13 | 5.00 | 6.25 | 7.50 | 8.75 | 10.25 | 11.50 | 12.75 | 12.75 | 18.50 | 21.25 |
| G Threaded | 4.00 | 4.50 | — | — | — | — | — | — | — | — | — | — |
| GG 150 ANSI | 4.00 | 4.00 | 5.00 | 6.00 | 8.00 | 8.62 | 13.75 | 14.88 | 15.69 | 15.69 | — | — |
| GGG 300 ANSI | 4.31 | 4.38 | 5.31 | 6.50 | 8.50 | 9.31 | 14.50 | 15.62 | 16.50 | 16.50 | — | — |
| H NPT Body Tapping | 1/2 | 1/2 | 3/4 | 3/4 | 1 | 1 | 1 | 1 | 1 | 1 | 1 | 1 |
| J NPT Cover Center Plug | 1/2 | 1/2 | 3/4 | 3/4 | 1 | 1 | 1 1/4 | 1 1/2 | 2 | 1 1/2 | 1 1/2 | 1 1/2 |
| K NPT Cover Tapping | 1/2 | 1/2 | 3/4 | 3/4 | 1 | 1 | 1 | 1 | 1 | 1 | 1 | 1 |
| Stem Travel | 0.7 | 0.8 | 1.1 | 1.7 | 2.3 | 2.8 | 3.4 | 4.0 | 4.5 | 5.1 | 5.63 | 6.75 |
| Approx. Ship Wt. Lbs. | 65 | 95 | 190 | 320 | 650 | 940 | 1675 | 2460 | 3100 | 3100 | 3100 | 3100 |
| X Pilot System | 17.00 | 18.00 | 21.00 | 34.00 | 37.00 | 39.00 | 45.00 | 48.00 | 50.00 | 50.00 | 50.00 | 68.00 |
| Y Pilot System | 10.00 | 11.00 | 12.00 | 20.00 | 22.00 | 24.00 | 26.00 | 29.00 | 30.00 | 30.00 | 30.00 | 39.00 |
| Z Pilot System | 10.00 | 11.00 | 12.00 | 20.00 | 22.00 | 24.00 | 26.00 | 29.00 | 30.00 | 30.00 | 30.00 | 39.00 |

661-02 Series Dimensions (Reduced Internal Port) (In Inches)

| Valve Size (Inches) | 3 | 4 | 6 | 8 | 10 | 12 | 14 | 16 | 18 | 20 | 24 | 30 |
|-------------------------|-------|-------|-------|-------|-------|-------|-------|-------|-------|-------|-------|-------|
| A 150 ANSI | 10.25 | 13.88 | 17.75 | 21.38 | 26.00 | 30.00 | 34.25 | 35.00 | 42.12 | 48.00 | 48.00 | 63.25 |
| AA 300 ANSI | 11.00 | 14.50 | 18.62 | 22.38 | 27.38 | 31.50 | 35.75 | 36.62 | 43.62 | 49.62 | 49.75 | — |
| B Dia. | 6.62 | 9.12 | 11.50 | 15.75 | 20.00 | 23.62 | 28.00 | 28.00 | 35.44 | 35.44 | 35.44 | 53.19 |
| C Max. | 9.25 | 11.75 | 15.25 | 20.25 | 23.75 | 27.25 | 29.31 | 34.12 | 35.00 | 40.25 | 40.25 | 56.50 |
| D 150 ANSI | — | 6.94 | 8.88 | 10.69 | — | — | — | — | — | — | — | — |
| DD 300 ANSI | — | 7.25 | 9.38 | 11.19 | — | — | — | — | — | — | — | — |
| E 150 ANSI | — | 5.50 | 6.75 | 7.25 | — | — | — | — | — | — | — | — |
| EE 300 ANSI | — | 5.81 | 7.25 | 7.75 | — | — | — | — | — | — | — | — |
| F 150 ANSI | 3.25 | 4.50 | 5.50 | 6.75 | 8.00 | 9.50 | 11.00 | 11.75 | 15.88 | 14.56 | 17.00 | 19.88 |
| FF 300 ANSI | 4.12 | 5.00 | 6.25 | 7.50 | 8.75 | 10.25 | — | 12.75 | 15.88 | 16.06 | 19.00 | — |
| H NPT Body Tapping | .375 | .50 | .75 | .75 | 1 | 1 | 1 | 1 | 1 | 1 | 1 | 1 |
| J NPT Cover Center Plug | .50 | .50 | .75 | .75 | 1 | 1 | 1.25 | 1.25 | 2 | 2 | 2 | 2 |
| K NPT Cover Tapping | .375 | .50 | .75 | .75 | 1 | 1 | 1 | 1 | 1 | 1 | 1 | 1 |
| Stem Travel | 0.6 | 0.8 | 1.1 | 1.7 | 2.3 | 2.8 | 3.4 | 3.4 | 3.4 | 4.5 | 4.5 | 6.5 |
| Approx. Ship Wt. Lbs. | 70 | 135 | 230 | 480 | 785 | 1410 | 2215 | 2215 | 2300 | 3400 | 2733 | 7700 |
| X Pilot System | 16.00 | 18.00 | 31.00 | 36.00 | 39.00 | 43.00 | 45.00 | 50.00 | 50.00 | 56.00 | 64.00 | 81.00 |
| Y Pilot System | 10.00 | 11.00 | 18.00 | 20.00 | 22.00 | 24.00 | 26.00 | 26.00 | 26.00 | 30.00 | 30.00 | 39.00 |
| Z Pilot System | 10.00 | 11.00 | 18.00 | 20.00 | 22.00 | 24.00 | 26.00 | 26.00 | 26.00 | 30.00 | 30.00 | 39.00 |

| 61-02 Valve Selection | 100-02 Pattern: Globe (G), Angle (A), End Connections: Threaded (T), Flanged (F) Indicate Available Sizes | | | | | | | | | | | | |
|-----------------------------|---|------|------|------|------|------|------|------|-------|-------|-------|-------|-------|
| | Inches | 2½ | 3 | 4 | 6 | 8 | 10 | 12 | 14 | 16 | 18 | 20 | 24 |
| | mm | 65 | 80 | 100 | 150 | 200 | 250 | 300 | 350 | 400 | 450 | 500 | 600 |
| Basic Valve 100-02 | Pattern | G, A | G, A | G, A | G, A | G, A | G, A | G, A | G, A | G, A | G | G | G, A |
| | End Detail | T, F | T, F | F | F | F | F | F | F | F | F | F | F |
| Suggested Flow (gpm) | Maximum | 300 | 460 | 800 | 1800 | 3100 | 4900 | 7000 | 8400 | 11000 | 14000 | 17000 | 25000 |
| | Maximum Intermittent | 370 | 580 | 990 | 2250 | 3900 | 6150 | 8720 | 10540 | 13700 | 17500 | 21700 | 31300 |
| Suggested Flow (Liters/Sec) | Maximum | 19 | 29 | 50 | 113 | 195 | 309 | 442 | 530 | 694 | 883 | 1073 | 1577 |
| | Maximum Intermittent | 23 | 37 | 62 | 142 | 246 | 387 | 549 | 664 | 863 | 1104 | 1369 | 1972 |

100-02 Series is the full internal port Powertrol.

| 661-02 Valve Selection | 100-21 Pattern: Globe (G), Angle (A), End Connections: Flanged (F) Indicate Available Sizes | | | | | | | | | | | |
|-----------------------------|---|-----|------|------|------|------|------|------|------|-------|-------|-------|
| | Inches | 3 | 4 | 6 | 8 | 10 | 12 | 14 | 16 | 18 | 20 | 24 |
| | mm | 80 | 100 | 150 | 200 | 250 | 300 | 350 | 400 | 450 | 500 | 600 |
| Basic Valve 100-21 | Pattern | G | G, A | G, A | G, A | G | G | G | G | G | G | G |
| | End Detail | F | F | F | F | F | F | F | F | F | F | F |
| Suggested Flow (gpm) | Maximum | 260 | 580 | 1025 | 2300 | 4100 | 6400 | 9230 | 9230 | 16500 | 16500 | 16500 |
| Suggested Flow (Liters/Sec) | Maximum | 16 | 37 | 65 | 145 | 258 | 403 | 581 | 581 | 1040 | 1040 | 1040 |

100-21 Series is the reduced internal port size version of the 100-02 Series.

Pilot System Specifications

Temperature Range

Water to 180°F Max

Materials

Standard Pilot System Materials

Pilot Control: Bronze ASTM B62

Trim: Stainless Steel Type 303

Rubber: Buna-N® Synthetic Rubber

Optional Pilot System Materials

Pilot Systems are available with optional Aluminum, Stainless Steel or Monel materials.

| Volts | | Amperes | | Volts | | Amperes | | Coil Resistance |
|------------|---------|---------|----------|-----------------|--------|---------|--|-----------------|
| DC | Holding | Pull In | AC 60 Hz | Holding | Inrush | Ohms | | |
| 24 | .603 | 24 | 24 | 2.88 | 25.4 | 0.5 | | |
| 28 | .629 | 120 | 120 | .575 | 5.1 | 14.1 | | |
| 32 | .500 | 208 | 208 | .330 | 2.93 | 40 | | |
| 48 | .293 | 240 | 240 | .288 | 2.54 | 58 | | |
| 115 | .122 | 440 | 440 | .156 | 1.38 | 174 | | |
| 125 | .119 | 480 | 440 | .143 | 1.27 | 233 | | |
| 252 | .072 | 2.45 | | | | | | |
| Volts | | Amperes | | Coil Resistance | | | | |
| (AC 50 Hz) | Holding | Inrush | Ohms | | | | | |
| 110 | .48 | 4.6 | 15.7 | | | | | |
| 220 | .24 | 2.3 | 66 | | | | | |
| 240 | .22 | 2.1 | 88 | | | | | |

Enclosure General purpose NEMA Type 3; Aluminum
Note: For other enclosures and NEMA Types, consult factory

Housing Body — Aluminum
Trim — Stainless Steel

Operating Pressure: Maximum pressure 300 psi, for higher pressure consult factory. AC or DC

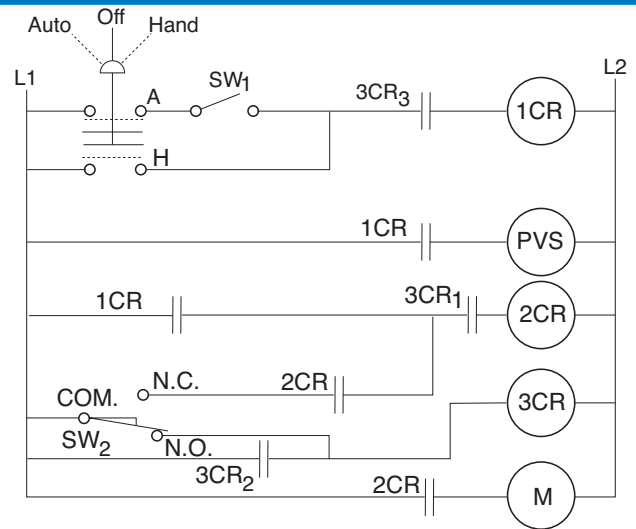
Coil Insulation Class A (molded)

AC voltage 15.4 watts

DC voltage 16.8 watts

Wiring Diagram

| | |
|-----------------|--|
| Auto-Off-Hand | = Selector Switch |
| 1CR | = Relay, DPST Normally Open |
| 2CR | = Relay, DPST Normally Open |
| 3CR | = Relay, TPST Normally Open |
| SW ₁ | = Switch, Remote Start, Automatic |
| SW ₂ | = Switch, SPDT, Valve Limit Switch Connect to N.C. Terminal |
| PVS | = Pilot Valve Solenoid |
| M | = Pump Motor Starter |



Note: SW₂ and PVS supplied by Cla-Val. All other electrical items supplied by customer. SW₂ is included in the X105L switch assembly which is mounted on the pump control valve cover.

When Ordering, Please Specify:

- Catalog No. 61-02/661-02
- Valve Size
- Pattern -Globe or Angle
- Pressure Class
- Trim Material
- Electrical Selection
- Desired Options
- When Vertically Installed (Flow Direction)

Note: For main valve option descriptions, refer to 100-02 (61-02) or 100-21 (661-02) Technical Data Sheets.

CLA-VAL

P.O. Box 1325 • Newport Beach, CA 92659-0325 • Phone: 949-722-4800 • Fax: 949-548-5441 • E-mail: claval@cla-val.com • Website cla-val.com
© Copyright Cla-Val 2011 Printed in USA Specifications subject to change without notice. E-61-02/661-02 (R-8/2011)