



Air Release & Check Valves



AIR VALVES



VACUUM BREAKER



CHECK VALVES

Table of Contents

Air Valves

33A Series	High-Performance Air Release & Vacuum Breaker Valves	3
33AWS Series	Well Service Combination Air Release & Vacuum Breaker Valves	3
34 Series	Air Release Valves	3
35 Series	Air & Vacuum Valves	3
36 Series	Combination Air Release and Vacuum Valve	4
39A Series	Potable water Anti Slam Air Release and Vacuum Break Air Valves	4
39B Series	Raw or storm water Anti Slam Air Release and Vacuum Break Air Valves	4
39C Series	Potable water Anti Slam Air Release and Vacuum Break Air Valves	4
39SA Series	High rise buildings Anti Slam Air Release and Vacuum Break Air Valves	5
33VB Series	Vacuum Breaker Valve	5
38VB/AR Series	Vacuum Breaker / Air Release Valves for Water Applications	5
34WW Series	Wastewater Service Air Release Valves	6
35WW Series	Wastewater Service Air and Vacuum Valves	6
36WW Series	Wastewater Service Combination Air Valves	6
39BWW Series	Raw sewage and slurry applications Anti Slam Air Release and Vacuum Break Air Valves	6

Check Valves

Model 81-01 Check Valve	7
Model 81-02 Check Valve	7
Model 81-12 Check Valve	7
Model 81-18 Check Valve	7
580 Series Silent Wafer Check Valve	8
581 Series Silent Globe Check Valve	8
582 Series Two-Door Wafer Check Valve	8
584 Series Flex-Check Valve	8
585 Series Swing Check Valve	9
587 Series Surge Blocker Check Valve	9
501A Series Wafer Swing Check Valve	9
Model Number Comparison	10-21
Warranty and Terms of Sale	22

Air Valves



Threaded



Flanged

33A Series High-Performance Air Release & Vacuum Breaker Valves

Cla-Val 33A Series eliminates air and prevents vacuum formations in pipelines. A large venting orifice and large float clearances freely exhaust or admits air during pipeline filling or draining.

- Standard Maximum Operating Pressure 300 psi
- Standard Epoxy Coated Ductile Iron Body
- Tested to Seal at 2 psi
- Meets AWWA C512 Requirements



Threaded



Flanged

33AWS Series Well Service Combination Air Release & Vacuum Breaker Valves

Cla-Val 33AWS Well Service Air Valves regulate air discharge from the pump column to prevent shock and air entering the system with each start. Conversely with each pump stop, full flow unrestricted air, is allowed back into the column preventing vacuum forming, which can damage pump seals, but also to prevent the pump restarting against a full head in the column because vacuum will prevent the pump column to drain.

- Full Unrestricted Air Vacuum Protection
- Easily Serviced
- Permits Regulating Volume of Air Discharge From Vertical Turbine Well Pump
- Tested to Seal at 2 psi
- Standard Max. Operating Pressure 300 psi
- 1" - 4" Standard with Throttling Device
- Standard Epoxy Coated Ductile Iron Body
- Arrestor Check Available on 4" and 6"
- Meets AWWA C512 Requirements



34 Series Air Release Valves

Cla-Val 34 Series Air Release Valves are designed to vent entrained air that collects at high points in a pipeline. This valve continuously eliminates air from a system by releasing small quantities of air before large air pockets can occur.

- Ductile Iron Body
- Stainless Steel Trim and Float
- Easily serviced without removal from pipeline
- Working pressures to 800 psi
- Engineered for drip tight seal at low pressures



35 Series Air & Vacuum Valves

Cla-Val Series 35 Air and Vacuum Valve is designed to perform two separate functions. First, it will allow large quantities of air to be exhausted from the pipeline as it is being filled with water. When this air has been vented completely, water will enter the valve causing the float to seal tightly against the seat to prevent water flow. Second, if the line is being drained, either intentionally or as a result of pipeline breakage, the valve responds to the loss in pressure and opens. This allows air to re-enter the pipeline and prevents a potentially damaging vacuum from developing.

- Provides High Capacity Air Venting and Air Intake
- Stainless Steel Floats Guaranteed
- Stainless Steel Trim Standard
- Fully Ported Valves - No Restrictions
- Designed For Drip Tight Seal At Low Pressures



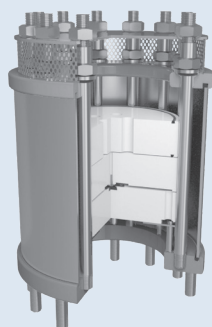
36 Series Combination Air Release and Vacuum Valve

Cla-Val 36 Series Air and Vacuum Valve is a multipurpose valve that combines the operation of both the Model 34 Air Release Valve and Model 35 Air and Vacuum Valve. It functions to exhaust large quantities of air in the pipeline during the filling cycle and to admit air, as necessary, to prevent a potentially dangerous vacuum from forming when being emptied either intentionally or as a result of pipeline breakage.

- Fully Ported Valves - No Restrictions
- Easily Serviced Without Removal From Pipeline
- Engineered For Drip Tight Seal At Low Pressures



1" & 2" Threaded



1" to 8" Flanged

39A SERIES - Pipeline Applications for potable water Anti Slam Air Release and Vacuum Break Air Valves

Cla-Val 39A SERIES is a double acting (3 stage) air release and vacuum break valve. They combine high volume air release, pressurized air release, anti slam and vacuum break all in one compact tubular design.

- Min operating pressure of 7.25 psi
- Max operating pressure of up to 1450 psi
- Available from DN15 up to DN300
- Full bore operation
- Operating temperatures are from 32° to 176°
- Available in various coating options
- Available in various materials of construction
- Larger sizes available on request



1" & 2" Threaded



3" to 12" Flanged

39B SERIES for raw or storm water, TSE & low-pressure applications and potable water - Anti Slam Air Release and Vacuum Break Air Valves

Cla-Val 39B SERIES is a double acting (3 stage) air release and vacuum break valve. They combine high volume air release, pressurized air release, anti slam and vacuum break all in one compact tubular design.

- Min operating pressure of 4.35 psi
- Max operating pressure of 363 psi
- Available from DN25 up to DN300
- Full bore operation
- Higher pressures available on request
- Operating temperatures are from 32° to 176°
- Available in various coating options
- Available in various materials of construction
- Larger sizes available on request



39C SERIES - Pump Discharge Applications for potable water Anti Slam Air Release and Vacuum Break Air Valves

Cla-Val 39C SERIES is a double acting (2 stage) air release and vacuum break valve. They combine high volume air release, anti slam and vacuum break all in one compact tubular design.

- Potable water and Pump stations
- Low pressure applications, 4.3 psi static sealing pressure
- Available from 1" to 20"
- Max pressure of 1450 psi
- Blank nozzle, there is no pressurized air release
- Biased

Air Valves



39SA SERIES for high rise buildings Anti Slam Air Release and Vacuum Break Air Valves

Cla-Val 39SA SERIES is a double acting air release and vacuum break valve. They combine pressurized air release and vacuum break all in one compact tubular design.

- Min operating pressure of 4.35 psi
- Max operating pressure of 145 psi
- Available in DN15 and DN25
- Operating temperatures are from 32° to 176°
- Available in various materials of construction
- Full bore operation



Threaded



Flanged

33VB Series Vacuum Breaker Valve

Designed to protect pipelines from vacuum collapse in waterworks distribution systems, the Cla-Val Model 33VB Vacuum Breaker Valve prevents vacuum conditions from forming at high points in the pipeline. The valve's large intake orifice freely admits air during pipeline draining.

- Fully unrestricted vacuum protection
- 400 psi maximum operating pressure
- Resilient seat included for drip-tight closure
- Large valve orifice allows for air intake at 1/4 psi vacuum
- Standard epoxy coated ductile iron body
- Easily Serviced without removal from pipeline



38VB/AR Series Vacuum Breaker / Air Release Valves for Water Applications

Cla-Val 38VB/AR Series Vacuum Breaker and Air Release Valve provide vacuum prevention and slow air release for pressure surge control. This valve is a reliable and economical pipeline surge control solution that requires no regular maintenance. Standard valves are designed to open with minimal (1/4 psi) pressure differential across the orifice. Higher or lower relief settings are available.



34WW Series Wastewater Service Air Release Valves

Cla-Val 34WW Series Water and Wastewater Air Release Valve is specially designed for sewage service. It will protect pipelines from entrained air or gases that collect at high points in sewage pipelines. This valve effectively eliminates air from a system by releasing small amounts of air before large air pockets can occur. In extreme cases, the continued accumulation of air without release valves can actually stop the flow completely.

- Stainless Steel Trim Standard
- Stainless Steel Floats Guaranteed
- Easily Serviced Without Removal From Pipeline
- Engineered For Drip Tight Seal At Low Pressures
- Optional Backwash Kit Available



35WW Series Wastewater Service Air and Vacuum Valves

Cla-Val 35WW Series Air and Vacuum Valve is designed to perform two separate functions in a sewage or wastewater system. First, it will allow large quantities of air to be exhausted from the pipeline as it is being filled. When this air has been vented completely, the liquid will enter the valve causing the float to seal tightly against the seat. Second, if the line is being drained, the valve responds to the loss in pressure and opens. This allows air to re-enter the pipeline and prevents a potentially damaging vacuum from developing.

- Stainless Steel Trim Standard
- Stainless Steel Floats Guaranteed
- Fully Ported Valves - No Restrictions
- Designed For Drip Tight Seal At Low Pressures
- Optional Backwash Kit Available



36WW Series Wastewater Service Combination Air Valves

Cla-Val 36WW Series Combination Air and Vacuum Valve is a multipurpose valve that combines the operation of both the 34WW Air Release Valve and 35WW Air and Vacuum Valve, especially for sewage and wastewater applications. It functions to exhaust large quantities of air in the pipeline during the filling cycle and to admit air, as necessary, to prevent a potentially dangerous vacuum from forming when being emptied either intentionally or as a result of pipeline breakage.

- Stainless Steel Trim Standard
- Stainless Steel Floats Guaranteed
- Fully Ported Valves - No Restrictions
- Engineered For Drip Tight Seal At Low Pressures
- Optional Backwash Kit Available



39BWW SERIES for raw sewage and slurry applications Anti Slam Air Release and Vacuum Break Air Valves

Cla-Val 39BWW SERIES is a double acting (3 stage) air release and vacuum break valve. They combine controlled air release, pressurized air release and vacuum break all in one compact tubular design.

- Min operating pressure of 4.35 psi
- Max operating pressure of 232 psi
- Available from DN50 up to DN300
- Full bore operation
- Operating temperatures are from 32° to 176°
- Available in various materials of construction

*Threaded Shown
(3" to 12" are Flanged)*

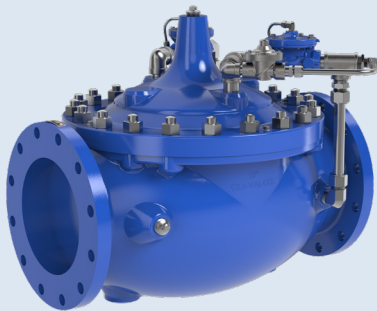
Check Valves



Model 81-01 Check Valve

Cla-Val Model 81-01/681-01 Check Valve are hydraulically operated No-Slam Check Valves. Both valves open when the pressure at the inlet exceeds the discharge pressure. A gradual rate of opening prevents sudden opening surges. When a pressure reversal occurs the higher downstream pressure is applied to the cover chamber through the control tube lines, and the valve closes drip tight.

- Simple Proven Design
- No-Slam Operation
- Drip-Tight Shut-Off
- No Packing Glands or Stuffing Boxes
- Easy to Install & Maintain



Model 81-02 Check Valve

Cla-Val Model 81-02/681-02 Check Valve is a hydraulically operated No-Slam Check Valve with dual speed controls. This valve opens when the pressure at the inlet exceeds the discharge pressure. A gradual rate of opening prevents sudden opening surges. When a pressure reversal occurs, the higher downstream pressure is applied to the cover chamber through the control tube lines, and the valve closes drip tight.

- Simple Proven Design
- No-Slam Operation
- Optimized using Cla-Check Software
- Drip-Tight Shut-Off
- Optional Speed Control
- Available in a Variety of Materials



Model 81-12 Check Valve

Cla-Val Model 81-12/681-12 Check Valve is a hydraulically operated No-Slam Check Valve. This valve opens when the pressure at the inlet exceeds the discharge pressure. A gradual rate of opening prevents sudden opening surges. When a pressure reversal occurs the higher downstream pressure is applied to the cover chamber through the control tube lines, and the valve closes drip tight.

- Simple Proven Design
- No-Slam Operation
- Drip-Tight Shut-Off
- Recommended for Variable Speed Pumps
- No Packing Glands or Stuffing Boxes
- Easy to Install & Maintain

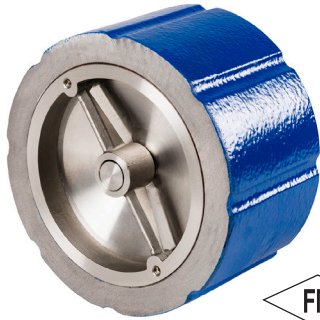


Model 81-18 Check Valve

Cla-Val Model 81-18/681-18 Check Valve is a hydraulically operated No-Slam Check Valve. This valve opens when the pressure at the inlet exceeds the discharge pressure. A gradual rate of opening prevents sudden opening surges. When a pressure reversal occurs the higher downstream pressure is applied to the cover chamber through the control tube lines, and the valve closes drip tight.

- Simple Proven Design
- No-Slam Operation
- Drip-Tight Shut-Off
- No Packing Glands or Stuffing Boxes
- Easy to Install & Maintain

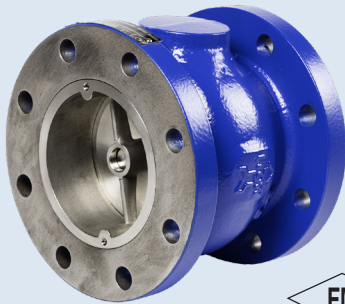
Check Valves



580 Series Silent Wafer Check Valve

Cla-Val 580 Series Silent Wafer Check Valve has a spring-loaded poppet that allows the valve to close before flow reversal occurs, resulting in a silent, non-slam closure. It is a truly silent check valve. For ease of installation, the valve can be installed in vertical or horizontal positions with flow up or flow down. The short lay length of the valve allows for a space-saving design. Silent Wafer Check Valves are available in sizes 2" to 10," with either a 125 lb. or 250 lb. pressure class rating.

- Operates Horizontally or Vertically
- Watertight Metal-to-Metal Seating
- Field Replaceable Parts
- Factory Mutual Approved 4 through 10-inches
- Optional Resilient Seat

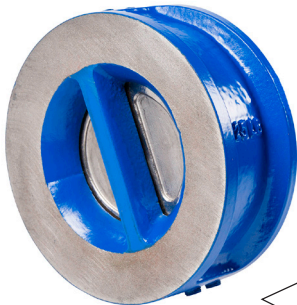


581 Series Silent Globe Check Valve

Cla-Val 581 Series Silent Globe Check Valve has a spring-loaded poppet that allows the valve to close before flow reversal occurs, resulting in a silent, non-slam closure.

Constructed of a cast iron body with bronze trim, the Cla-Val Silent Globe Check Valve offers watertight shutoff with metal-to-metal seating. For special applications, stainless steel trim is available and Buna-N® resilient seats are available as options.

- Operates Horizontally or Vertically
- Watertight Metal-to-Metal Seating
- Field Replaceable Parts
- Factory Mutual Approved 4 through 12-inches
- Optional Resilient Seat



582 Series Two-Door Wafer Check Valve

Cla-Val 582 Series Two-Door Wafer Check Valve has torsion springs that force the two doors to shut before flow reversal, reducing the water hammer potential that normally occurs with single-door swing check valves. To help reduce water hammer, the two-door design also reduces the travel distance from open to shut off for a quicker response. Extremely short inlay length, the valve is both a compact and an economical solution.

- Low Head Loss
- Resilient Seat
- Non-Slam Closure
- Stabilizer Spheres Prevent Vibration Wear



584 Series Flex-Check Valve

Cla-Val Model 584 Series Flex-Check Valve is designed for long service life and maintenance-free check valve operation compared to traditional swing check valves. During system flowing conditions the disc flexes up to the open position allowing unrestricted flow through the valve. When system reverse flow conditions occur the disc flexes down to the closed position for drop-tight seal preventing reverse flow. It has a full-flow area body with an integral seat at a 45° angle to reduce head loss.

- Full Pipe Size Flow Area
- Drip Tight Seating
- Non-Slam Closure
- NSF/ANSI 61 Fusion Bonded Epoxy Coating
- Available with Integral Surge Protector, Position Indicator and Backflushing features
- Sizes 2 through 36 inches available
- Meets the Federal Mandate Limiting Lead in Drinking Water

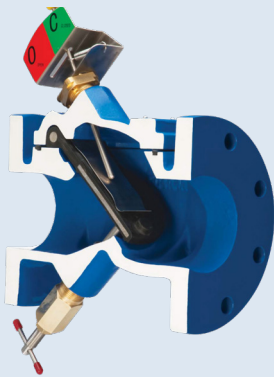
Check Valves



585 Series Swing Check Valve

Cla-Val 585 Series Swing Check Valve is designed for long service life and maintenance-free operation. It has a full-flow area body and is equipped with a disc arm with dual precision pins for optimum disc connection and protection against damage due to vibration.

- Full Pipe Size Flow Area - Unrestricted flow
- Heavy Duty Disc Connections
- Non-Clog Design
- Fusion Bonded Epoxy Coating NSF-61
- Designed, Manufactured and Tested in Accordance with ANSI/AWWA C508 Standard
- Resilient Seat - Drip Tight Seating
- Three field adjustable closure options:
 - Lever and Weight (LW)
 - Air Cushion (AC)
 - Lever and Spring (LS)



587 Series Surge Blocker Check Valve

Cla-Val 587 Series Surge Blocker effectively prevents slamming and resulting surge conditions caused by reverse flow. The valve's 35° short disc stroke results in rapid closure as compared to a conventional swing check valve with an 80° to 90° typical stroke distance.

- Non-Clog Design
- Reinforced Disc for drip tight closure
- Short disc stroked ensures non-slam operation
- Fusion Bonded Epoxy Coating NSF-61
- Optional Mechanical Disc Position Indicator, available upon request
- Optional Backflow Actuator, available upon request
- Designed and Manufactured to AWWA C508
- NSF/ANSI 61 and 372 Certified



501A Series Wafer Swing Check Valve

Cla-Val Series 501A Wafer Swing Check Valve has a quick, spring-assisted closure that minimizes the possibility of water hammer. The swing check design offers low head loss and a full-flow passageway making it ideal for water or wastewater applications. The short lay length of the valve allows for a space-saving design. It is available in sizes 2" to 30," with either a 125 lb. or 150 lb. pressure class rating.

- Low Head Loss
- Watertight Nitrile Seat
- Spring Assisted, Fast Closure
- Extremely Light Weight

Model Number Comparison



39A - Air Valve

Size	VOM Models	Vent-Tech Potable Water	Vent-Tech Low Pressure Sealing	End Connection	Max Operating Pressure (psi)
1"	025RBX1621	-	01WZW25TCS	Screwed NPT	362
1"	025RBX1631	-	01WZW25SCS	#150	232
1"	025RBX2521	01WTR25TCS	-	Screwed NPT	362
1"	025RBX2531	01WTR25SCS	-	#300	323
1"	025RBX4021	-	-	Screwed	323
1"	025RBX4031	-	-	#300	580
1"	025RBX6431	-	-	#600	928
1"	025RBX10031	-	-	#600	1450
2"	050RBX1621	-	-	#150	232
2"	050RBX1631	-	-	#150	232
2"	050RBX2521	02WTR25SCS	02WZW25TCS	Screwed NPT	362
2"	050RBX2531	02WTR25TCS	02WZW25SCS	#300	363
2"	050RBX4021	-	-	-	580
2"	050RBX4031	-	-	#300	580
2"	050RBX6431	-	-	#600	928
2"	050RBX10031	-	-	#600	1450
3"	-	03WTR25TCS	03WZW25TCS	Screwed NPT	362
3"	080RBX1631	-	-	#150	232
3"	080RBX2531	03WTR25SCS	03WZW25SCS	#300	363
3"	080RBX4031	-	-	#300	580
3"	080RBX6431	-	-	#600	928
3"	-	04WTR25TCS	04WZW25TCS	Screwed NPT	362
3"	080RBX10031	-	-	#600	1450
4"	100RBX1631	-	-	#150	232
4"	100RBX2531	04WTR25SCS	04WZW25SCS	#300	363
4"	100RBX4031	-	-	#300	580
4"	100RBX6431	-	-	#600	928
4"	100RBX10031	-	-	#600	1450
6"	150RBX1631	-	-	#150	232
6"	150RBX2531	06WTR25SCS	06WZW25SCS	#300	363
6"	150RBX4031	-	-	#300	580
6"	150RBX6431	-	-	#600	928
6"	150RBX10031	-	-	#600	1450
8"	200RBX1631	-	08WZW19SCS	#150	232
8"	200RBX2531	08WTR25SCS	-	#300	363
8"	200RBX4031	-	-	#300	580
8"	200RBX6431	-	-	#600	928
8"	200RBX10031	-	-	#600	1450
10"	250RBXc1631	-	10WZW19SCS	#150	232
10"	250RBXc2531	10WTR25SCS	-	#300	363
12"	300RBXc1631	-	12WZW19SCS	#150	232
12"	300RBXc2531	12WTR25SCS	-	#300	363

Model Number Comparison

AIR RELEASE VALVES

THREADED N.P.T. INLET AND OUTLET

Materials of Construction: Cast Iron Body, Stainless or Bronze Trim with Buna-N®

Size	MWP	CLA-VAL	APCO	CRISPIN	EMPIRE/GA	VAL-MATIC
0.5	175	3450-AR116	50	M5	905	15A
0.75	175	3475-AR116	50	M8	905	15A.2
1	175	3410-AR116	50	M10	905	15A.3
0.5	175	3450-AR332	55	AR5	910	22.4
0.75	175	3475-AR332	55	AR8	910	22.4
1	175	3410-AR332	55	AR10	910	22.3
0.5	300	3450-AR332.3	55	N/A	910	22.9
0.75	300	3475-AR332.3	55	NM	910	22.9
1	300	3410-AR332.3	55	N/A	910	22.9
0.75	150	3475-AR018	65	N/A	912	25.5
1	150	3410-AR018	200A	N/A	912	25.5
0.5	300	3450-AR564	200A	NM	920	25.6
0.75	300	3475-AR564	200A	NM	920	25.6
1	150	3410-AR316C	200A	PL10	920	38
2	150	3420-AR316C	200A	PL10A	920	38.2
1	300	3410-AR332.3C	200A	PL10	920	38.5
2	300	3420-AR332.3C	200A	PL10A	920	38.6
2	150	3420-AR038C	200	PL20	922	45
3	150	3430-AR038C	200	P30	922	45.2
2	300	3420-AR732.3C	200	PL20	922	45.5
3	300	3430-AR732.3C	200	P30	922	45.6
2	500	3420-AR-HP500	205	HP20A	NM	50
2	800	3420-AR-HP800	206	HP20C	NM	50HP
6x1	150	34AR-1.6C	207	----	----	----
6x1	300	34AR-75.6C	207	----	----	----

AIR / VACUUM VALVES

THREADED N.P.T. INLET AND OUTLET

Materials of Construction: Cast Iron Body, Stainless or Bronze Trim with Buna-N®

Size	MWP	CLA-VAL	APCO	CRISPIN	EMPIRE/GA	VAL-MATIC
0.5	150	350-AV	141	A5	930	100
0.5	300	350-AV.3	141	A5	930	150
1	150	351-AV	142	A10	930	101
1	300	351-AV.3	142	A10	930	151
2	150	352-AV	144	A20	930	102
2	300	352-AV.3	144	A20	930	152
3	150	353-AV	146	A30	930	103
3	300	353-AV.3	146	A30	930	153

Model Number Comparison

AIR / VACUUM VALVES

ANSI CLASS 125 FLANGED INLET WITH PLAIN HOOD OUTLET

Materials of Construction: Cast Iron Body, Stainless Trim with Buna-N®

Size	MWP	CLA-VAL	APCO	CRISPIN	EMPIRE/GA	VAL-MATIC
4	150	354-AV	152	AL41	930	104
6	150	356-AV	153	AL61	930	106
8	150	358-AV	154	AL81	930	108
10	150	3510-AV	155	AL101	930	110
12	150	3612-AV	156	AL121	930	112
14	150	3S14-AV	157	AL141	930	114
16	150	3516-AV	158	AL161	930	116

ANSI CLASS 250 FLANGED INLET WITH PLAIN HOOD OUTLET

Materials of Construction: Cast Iron Body, Stainless Trim with Buna-N®

Size	MWP	CLA-VAL	APCO	CRISPIN	EMPIRE/GA	VAL-MATIC
4	300	354-AV.3	152	AL42	930	154
6	300	356-AV.3	153	AL62	930	156
8	300	358-AV.3	154	AL82	930	158
10	300	3510-AV.3	155	AL102	930	160
12	300	3512-AV.3	156	AL122	930	162
14	300	3514-AV.3	157	AL142	930	164
16	300	3516-AV.3	158	AL162	930	166

COMBINATION AIR VALVES - SINGLE BODY TYPE

THREADED N.P.T. INLET AND OUTLET

Materials of Construction: Cast Iron Body, Stainless Trim with Buna-N®

Size	MWP	CLA-VAL	APCO	CRISPIN	EMPIRE/GA	VAL-MATIC
1	300	361-CAV564.3	143C	UL10.1	945	201C
2	300	362-CAV332.3	145C	UL20.1	945	202C
3	300	363-CAV332.3	147C	UL30.1	945	203C
4	300	364-CAV332.3	149C	UL40.1	945	204C
6 Flanged	150	366-CAV316	150C	UL61	960	206C
6 Flanged	300	366-CAV332	150C.2	----	----	----
8 Flanged	150	368-CAV316	151C.1	UL81	980	208C
8 Flanged	300	368-CAV332	151C.2	----	----	----

Model Number Comparison

COMBINATION AIR VALVES - SINGLE BODY TYPE

ANSI CLASS 125 FLANGED INLET WITH THREADED OUTLET

Materials of Construction: Cast Iron Body, Stainless Trim with Buna-N®

Size	MWP	CLA-VAL	APCO	CRISPIN	EMPIRE/GA	VAL-MATIC
3	150	363-CAV332F	147C	UL31	945J	203C.14
4	150	364-CAV332F	149C	UL41	945J	204C.14

ANSI CLASS 125 FLANGED INLET WITH THREADED OUTLET

Materials of Construction: Cast Iron Body, Bronze Trim with Buna-N®

Size	MWP	CLA-VAL	APCO	CRISPIN	EMPIRE/GA	VAL-MATIC
3	150	363-CAV332FB	147C	UL31.1	N/A	203C.13
4	150	364-CAV32FB	149C	UL41.1	N/A	204C.13

ANSI CLASS 250 FLANGED INLET WITH THREADED OUTLET

Materials of Construction: Cast Iron Body, Stainless Trim with Buna-N®

Size	MWP	CLA-VAL	APCO	CRISPIN	EMPIRE/GA	VAL-MATIC
3	300	363-CAV332.3F	147C	UL32	945J	203C.15
4	300	364-CAV332.3F	149C	UL42	945J	204C.15

ANSI CLASS 250 FLANGED INLET WITH THREADED OUTLET

Materials of Construction: Cast Iron Body, Bronze Trim with Buna-N®

Size	MWP	CLA-VAL	APCO	CRISPIN	EMPIRE/GA	VAL-MATIC
3	300	363-CAV32.3FB	147C	UL32.1	N/A	203C.5
4	300	364-CAV332.3FB	149C	UL42.1	N/A	204C.5

ANSI CLASS 125 FLANGED INLET WITH PLAIN HOODED OUTLET

Materials of Construction: Cast Iron Body, Stainless Trim with Buna-N®

Size	MWP	CLA-VAL	APCO	CRISPIN	EMPIRE/GA	VAL-MATIC
6	150	366-CAV038	150C	C61	N/A	206C
8	150	368-CAV038	151C	C81	N/A	208C

ANSI CLASS 250 FLANGED INLET WITH PLAIN HOODED OUTLET

Materials of Construction: Cast Iron Body, Stainless Trim with Buna-N®

Size	MWP	CLA-VAL	APCO	CRISPIN	EMPIRE/GA	VAL-MATIC
6	300	366-CAV038.3	150C	C62	N/A	256C
8	300	368-CAV038.3	151C	C82	N/A	258C

Model Number Comparison

COMBINATION AIR VALVES - DUAL BODY TYPE THREADED N.P.T. INLET AND OUTLET

Materials of Construction: Cast Iron Body, Stainless or Bronze Trim with Buna-N®

Size	MWP	CLA-VAL	APCO	CRISPIN	EMPIRE/GA	VAL-MATIC
1	150	MTP361-CAV332	1801	AL10/U15	950	101/22
1	300	MTP361-CAV116.3	1801	A41/AR10	950	151/22.9
2	150	MTP362-CAV332	1802	AL20/M5	950	102/22
2	300	MTP36i-CAV116.3	1802	AL20/AR10	950	152/22.9
3	150	MTP363-CAV332	1803	AL30/M5	950	103/22
3	300	MTP363-CAV116.3	1803	130M/R10	950	153/22.9

ANSI CLASS 125 FLANGED INLET WITH PLAIN HOODED OUTLET

Materials of Construction: Cast Iron Body, Stainless or Bronze Trim with Buna-N®

Size	MWP	CLA-VAL	APCO	CRISPIN	EMPIRE/GA	VAL-MATIC
4	150	MTP364-CAV316	1804	AL41/PL10	950	104/38
6	150	MTP366-CAV316	1806	AL61/PL10	950	106/38
8	150	MTP368-CAV316	1808	AL81/PL10	950	108/38
8	150	MTP368-CAV038	1808	AL81/PL20	951	108/45
10	150	MTP3610-CAV316	1810	AL101/PL10	950	110/38
10	150	MTP3610-CAV038	1810	AL101/PL20	951	110/45
12	150	MTP3612-CAV316	1812	AL121/PL10	950	112/38
12	150	MTP3612-CAV038	1812	AL121/PL20	951	112/45
14	150	MTP3614-CAV316	1814	AL141/PL10	950	114/38
14	150	MTP3614-CAV038	1814	AL141/PL20	951	114/45
16	150	MTP3616-CAV16	1816	AL161/PL10	950	116/38
16	150	MTP3616-CAV038	1816	AL161/PL20	951	116/45

ANSI CLASS 250 FLANGED INLET WITH PLAIN HOODED OUTLET

Materials of Construction: Cast Iron Body, Stainless or Bronze Trim with Buna-N®

Size	MWP	CLA-VAL	APCO	CRISPIN	EMPIRE/GA	VAL-MATIC
4	300	MTP364-CAV316.3	1804.2	AL42/PL10	950	154/38.5
6	300	MTP366-CAV16.3	1806.2	AL62/PL10	950	156/38.5
8	300	MTP368-CAV16.3	1808.2	AL82/PL10	950	158/38.5
8	300	MTP368-CAV38.3	1808.2	AL82/PL20	951	158/45.5
10	300	MTP3610-CAV316.3	1810.2	AL102/PL10	950	160/38.5
10	300	MTP3610-CAV038.3	1810.2	AL102/PL20	951	160/45.5
12	300	MTP3612-CAV316.3	1812.2	AL122/PL10	950	162/38.5
12	300	MTP3612-CAV038.3	1812.2	AL122/PL20	951	162/45.5
14	300	MTP3614-CAV16.3	1814.2	AL142/PL10	950	164/38.5
14	300	MTP3614-CAV038.3	1814.2	AL142/PL20	951	164/45.5
16	300	MTP3616-CAV316.3	1816.2	AL162/PL10	950	166/38.5
16	300	MTP3616-CAV038.3	1816.2	AL162/PL20	951	166/45.5

Model Number Comparison

AIR & VACUUM VALVE WITH ARRESTOR CHECK

ANSI CLASS 150 FLANGED INLET

Materials of Construction: Cast Iron Body, Stainless or Bronze Trim with Buna-N®

Size	MWP	CLA-VAL	APCO	CRISPIN	EMPIRE/GA	VAL-MATIC
3	150	353-AV/AC	1903	AL31 SC	931	103WS
4	150	354-AV/AC	1904	AL41SC	931	104WS
6	150	356-AV/AC	1906	AL61SC	931	106WS
8	150	368-AV/AC	1908	AL81SC	931	108WS
10	150	3510-AV/AC	1910	AL1011SC	931	110WS
12	150	3612-AV/AC	1912	AL1211SC	931	112WS
14	150	3514-AV/AC	1914	AL1411SC	931	114WS
16	150	3516-AV/AC	1916	AL1611SC	931	116WS

COMBINATION VALVE WITH ARRESTOR CHECK

ANSI CLASS 150 FLANGED INLET

Materials of Construction: Cast Iron Body, Stainless or Bronze Trim with Buna-N®

Size	MWP	CLA-VAL	APCO	CRISPIN	EMPIRE/GA	VAL-MATIC
3	150	MTP363-CAV/AC	1703	AL31/SCM5	983	103WS/22
4	150	MTP364-CAV/AC	1704	AL411SCIPL10	983	104WS/22
6	150	MTP366-CAV/AC	1706	AL611SC/PL10	983	106WS/22
8	150	MTP368-CAV/AC	1708	AL811SC/PL10	983	108WS/22
10	150	MTP3610-CAV/AC	1710	AL1011/SC/PL10	983	110WS/22
12	150	MTP3612-CAV/AC	1712	AL1211/SC/PL10	983	112WS/22
14	150	MTP3614-CAV/AC	1714	AL1411/SC/PL10	983	114WS/22
16	150	MTP3616-CAV/AC	1716	AL1611/SC/PL10	983	116WS/22

WELL SERVICE VALVES

THREADED INLET AND OUTLET

Materials of Construction: Cast Iron Body, Stainless or Bronze Trim with Buna-N®

Size	MWP	CLA-VAL	APCO	CRISPIN	EMPIRE/GA	VAL-MATIC
0.5	150	370-WS	141WD	D5	933	100WS
0.5	300	370-WS.3	141WD	D5	933	150WS
1	150	371-WS	142WD	DL10	933	101WS
1	300	371-WS.3	142WD	DL10	933	151WS
2	150	372-WS	144WD	DL20	933	102WS
2	300	372-WS.3	144WD	DL20	933	152WS
3	150	373-WS	146WD	DL30	933	103WS
3	300	373-WS.3	146WD	DL30	933	153WS

Model Number Comparison

VACUUM BREAKER (ONLY)

THREADED N.P.T. INLET AND OUTLET

Materials of Construction: Cast Iron Body, Stainless Trim with Buna-N®

Size	MWP	CLA-VAL	APCO	CRISPIN	EMPIRE/GA	VAL-MATIC
1/2	300	38.5VB	1500,5T	–	990	1800.5VB
1	300	381VB	1501T	–	990	1801VB
2	300	382VB	1502T	–	990	1802VB
3	300	383VB	1503T	–	990	1803VB

VACUUM BREAKER/AIR RELEASE (DUAL BODY)

THREADED INLET AND OUTLET

Materials of Construction: Cast Iron Body, Stainless Trim with Buna-N®

Size	MWP	CLA-VAL	APCO	CRISPIN	EMPIRE/GA	VAL-MATIC
1/2	300	38.5VB/AR116	1500,5TC	–	GA992	1800.5VB/22
1	300	381VB/AR116	1501TC	–	GA992	1801VB/22
2	300	382VB/AR116	1502TC	–	GA992	1802VB/22
3	300	383VB/AR116	1503C	–	GA992	1803VB/22

VACUUM BREAKER (ONLY)

ANSI CLASS 125 FLANGED INLET AND HOOD OUTLET

Materials of Construction: Cast Iron Body, Bronze/Stainless Steel Trim with Buna-N®

Size	MWP	CLA-VAL	APCO	CRISPIN	EMPIRE/GA	VAL-MATIC
3	150	383VB	1503	–	990	1803VB
4	150	384VB	1504	–	990	1804VB
6	150	386VB	1506	–	990	1806VB
8	150	388VB	1508	–	990	1808VB
10	150	3810VB	1510	–	990	1810VB
12	150	3812VB	1512	–	990	1812VB
14	150	3814VB	1514	–	990	1814VB
16	150	3816VB	1516	–	990	1816VB

VACUUM BREAKER (ONLY)

ANSI CLASS 125 PLAIN OUTLET AND NO HOOD

Materials of Construction: Cast Iron Body, Bronze/Stainless Steel Trim with Buna-N®

Size	MWP	CLA-VAL	APCO	CRISPIN	EMPIRE/GA	VAL-MATIC
3	150	383VBFF	1503Plain	–	990	1803VBF
4	150	384VBFF	1504Plain	–	990	1804VBF
6	150	386VBFF	1506Plain	–	990	1806VBF
8	150	388VBFF	1508Plain	–	990	1808VBF
10	150	3810VBFF	1510Plain	–	990	1810VBF
12	150	3812VBFF	1512Plain	–	990	1812VBF
14	150	3814VBFF	1514Plain	–	990	1814VBF
16	150	3816VBFF	1516Plain	–	990	1816VBF

Model Number Comparison

VACUUM BREAKER/AIR RELEASE (DUAL BODY)

THREADED INLET AND OUTLET

Materials of Construction: Cast Iron Body, Stainless Trim with Buna-N®

Size	MWP	CLA-VAL	APCO	CRISPIN	EMPIRE/GA	VAL-MATIC
4	150	384VB/AR116	1504C	–	GA992	1804VB/38
6	150	386VB/AR116	1506C	–	GA992	1806VB/38
8	150	388VB/AR116	1508C	–	GA992	1808VB/38
10	150	3810VB/AR116	1510C	–	GA992	1810VB/38
12	150	3812VB/AR116	1512C	–	GA992	1812VB/38
14	150	3814VB/AR116	1514C	–	GA992	1814VB/38
16	150	3816VB/AR116	1516C	–	GA992	1816VB/38

SEWAGE AIR RELEASE VALVES

THREADED INLET AND OUTLET

Materials of Construction: Cast Iron Body, Stainless Trim with Buna-N®

Size	MWP	CLA-VAL	APCO	CRISPIN	EMPIRE/GA	VAL-MATIC
2	150	34-WW25-316	400	SL20	925	48
3	150	34-WW35-316	400	SL30	925	48.2
4	150	34-WW45-316	400	SL40	925	48.3
2	150	34S-WW25-316	400S	S20S	929	48S
3	150	34S-WW35-316	400S	N/A	929	48S.2
4	150	34S-WW45-316	400S	N/A	929	48S.3
2	150	34-WW21-716	450	S20	927	49
3	150	34-WW31-716	450	S30	927	49.2
4	150	34-WW41-716	450	S40	927	49.3

VALVES WITH BACKWASH ACCESSORIES

THREADED INLET AND OUTLET

Materials of Construction: Cast Iron Body, Stainless or Bronze Trim with Buna-N®

Size	MWP	CLA-VAL	APCO	CRISPIN	EMPIRE/GA	VAL-MATIC
2	150	34-WW25-316BW	400WA	SL20B	925F	48BW
3	150	34-WW35-316BW	400WA	SL30B	925F	48.2BW
4	150	34-WW45-316BW	400WA	SL40B	925F	48.3BW
2	150	34S-WW25-316BW	400SWA	S20SB	929F	48SBW
3	150	34S-WW35-316BW	400SWA	N/A	929F	48S.2BW
4	150	34S-WW45-316BW	400SWA	NM	929F	48S.3BW
2	150	34-WW21-716BW	450WA	S20B	927F	49BW
3	150	34-WW31-716BW	450WA	S30B	927F	49.2BW
4	150	34-WW41-716BW	450WA	S40B	927F	49.3BW

Model Number Comparison

SEWAGE COMBINATION AIR VALVES

THREADED INLET AND OUTLET

Materials of Construction: Cast Iron Body, Stainless or Bronze Trim with Buna-N®

Size	MWP	CLA-VAL	APCO	CRISPIN	EMPIRE/GA	VAL-MATIC
2X1	150	35-WW21	401	SL20A	935	301
2X1	150	36S-WW21	401S	S10AS	939	301S
2X2	150	35-WW22	402	S20A	939	302
2X2	150	35S-WW22	402S	S20AS	939	302S
3X3	150	35-WW33	403	S30	935	303

SEWAGE AIR AND VACUUM VALVES

VALVES WITH BACKWASH ACCESSORIES

THREADED INLET AND OUTLET

Materials of Construction: Cast Iron Body, Stainless or Bronze Trim with Buna-N®

Size	MWP	CLA-VAL	APCO	CRISPIN	EMPIRE/GA	VAL-MATIC
2X1	150	35-WW21BW	401WA	SL20AB	935	301BW
2X1	150	35S-WW21 BW	401SWA	S1 OASB	939	301 SBW
2X2	150	35-WW22BW	402WA	S20AB	939	302BW
2X2	150	35S-WW22BW	402SWA	S20ASB	939	302SBW
3X3	150	35-WW33BW	403WA	S30B	935	303BW

ANSI 125 FLANGED WITH THREADED OUTLET

Materials of Construction: Cast Iron Body, Stainless or Bronze Trim with Buna-N®

Size	MWP	CLA-VAL	APCO	CRISPIN	EMPIRE/GA	VAL-MATIC
4X4	150	35-WW44	404	S41A	935	304
6X6	150	35-WW66	406	S61A	935	306
8X8	150	3S-WW88	408	S81A	935	308

VALVES WITH BACKWASH ACCESSORIES

ANSI 125 FLANGED WITH THREADED OUTLET

Materials of Construction: Cast Iron Body, Stainless or Bronze Trim with Buna-N®

Size	MWP	CLA-VAL	APCO	CRISPIN	EMPIRE/GA	VAL-MATIC
4X4	150	35-WW44BW	404WA	S41AB	935F	304BW
6X6	150	35-WW66BW	406WA	S61AB	935F	306BW
8X8	150	35-WW88BW	408WA	S81AB	935F	308BW

Model Number Comparison

SEWAGE COMBINATION AIR VALVES

THREADED INLET AND OUTLET

Material of construction: Cast Iron Body, Stainless or Bronze Trim with Buna -N®

Size	MWP	CLA-VAL	APCO	CRISPIN	EMPIRE/GA	VAL-MATIC
2X1	150	36-WW21	443	USL20	942	801
2X2	150	36-WW22	445	US20	942	802
3X3	150	36-WW33	447	US30	942	803
4X4	150	36-WW44	449	US40	942	804

VALVES WITH BACKWASH ACCESSORIES

THREADED INLET AND OUTLET

Materials of Construction: Cast Iron Body, Stainless or Bronze Trim with Buna-N®

Size	MWP	CLA-VAL	APCO	CRISPIN	EMPIRE/GA	VAL-MATIC
2X1	150	36-WW21BW	443WA	USL20B	942F	801BW
2X2	150	36-WW22BW	441WA	US20B	942F	802BW
3X3	150	36-WW33BW	447WA	US30B	942F	803BW
4X4	150	36-WW44BW	449WA	US40B	942F	804BW

SEWAGE COMBINATION AIR VALVES

1" - 2" - 3" Candelabra Style 4" Side Mounted)

Dual Body / Threaded in/out

Materials of Construction: Cast Iron Body, Stainless or Bronze Trim with Buna-N®

Size	MWP	CLA-VAL	APCO	CRISPIN	EMPIRE/GA	VAL-MATIC
2X1	150	MTP361WW3420/316	401CP.1	5120A/SL20	959	48A/301A
2X2	150	MTP362WW3420/316	402CP.1	520A/SL20	959	48A/302A
3X3	150	MTP363WW3420/316	403CP.1	530A/SL20	959	48A/303A
4X4	150	MTP364WW3420/316	404CP.1	541A/SL20	955	48A/304A

SEWAGE COMBINATION AIR VALVES

Dual Body / Threaded in/out with Backwash Accessories

Materials of Construction: Cast Iron Body, Stainless or Bronze Trim with Buna-N®

Size	MWP	CLA-VAL	APCO	CRISPIN	EMPIRE/GA	VAL-MATIC
2X1	150	MTP361WW3420/316BW	401C.1	5120A/SL20BW	959F	48A/301ABW
2X2	150	MTP362WW3420/316BW	402C.1	520A/SL20BW	959F	48A/302ABW
3X3	150	MTP363WW3420/316BW	403C.1	530A/SL20BW	959F	48A/303ABW
4X4	150	MTP364WW3420/316BW	404C.1	540A/SL20BW	955F	48A/304ABW

Model Number Comparison

SILENT CHECK VALVE MODEL NUMBER COMPARISONS

(BASED ON MANUFACTURERS PUBLISHED INFORMATION)

Materials of Construction: Cast Iron Boday, Bronze Trim Stainless Steel Spring

Company Name	Wafer Style	Size	Globe Style	Size
Cla-Val	Series 580	2" - 10"	Series 581	2 1/2" - 42"
APCO	Series 300	1" - 10"	Series 600	3" - 42"
Clow/William Hager	Series 329	1" - 10"	Series 600	3" - 42"
Empire/GA	Series 290	2" - 10"	Series 280	3" - 24"
Metra Flex	Series 700	2" - 10"	Series 900	3" - 24"
Crispin	Series WC	2" - 10"	Series GC	2 1/2" - 16"
Flow-matic	Series WC	2" - 10"	Series 402	4" - 12"
Hammond	Series IR925A -	2" - 10"	Series 1R354A	3" - 12"
Val-Matic	Series 1400	1" - 10"	Series 1800	2 1/2" - 42"
Nibco	Series W910	2" - 10"	Series F910	3" - 24"
ITT Grinnell	Series 400	2" - 10"	Series 500	3" - 16"
Miller	Series 153	2" - 10"	Series 162	3" - 24"
Muessco	Series 91AP	1" - 10"	Series 105MAP	3" - 24"
Durabla	Series	2" - 10"	Series	3" - 16"
Jenkins	Series 777	2 1/2" - 10"	Series 779	
C.P.V.	Series G	2" - 10"	Series GB	3" - 24"
Smolenski	Series 11	2" - 10"	Series 9	3" - 24"

Model Number Comparison

TWO DOOR CHECK VALVE MODEL NUMBER COMPARISONS (BASED ON MANUFACTURERS PUBLISHED INFORMATION)

Cla-Val Standard Materials of Construction:

Cast Iron Body, Buna-N, Seat T316 S.S. Pins and Springs-
Disc: 2" - 12" Solid Bronze 14" - 60" Solid Aluminum Bronze - Springs 18"-60" 17-1 S.S.

*Alternative Materials of Construction (same as above except)

Disc: 2" - 24" Solid Bronze,

Disc: 30" - 60" Ductile Iron with weld on Bronze Face

Disc: 30" - 60" Ductile Iron, Electroless Nickel Plated

Spring: T316 S.S.

Company Name	Wafer Style	Size	Wafer LUG	Size
Cla-Val	Series 582	2" - 60"		
Marlin/Mission	Series Style A	2" - 72"		
Mission	Series HMP	2" - 72"	Series HMPL	
Gulf	Series MP12-50-5081-SF	2" - 48"	Series MB12-5081STF	2" - 12"
Val-Matic	Series 8000	2" - 48"		
Muessco	Series 71AP	2" - 30"		
Bell Gossett	Series	2" - 10"		
Metra Flex	Series C	2" - 12"		
APCO*	Series 9000	2" - 60"	Series 9000L	2" - 36"
Center Line	Series CLC	2" - 24"		

Warranty & Terms of Sale

WARRANTY

Limited Warranty

Air Valves and Check Valves as supplied by Cla-Val, are warranted for one year from date of shipment against manufacturing defects in material and workmanship that develop in the service for which they are designed, provided the products are installed and used in accordance with all applicable instructions and limitations issued by Cla-Val. Electronic components manufactured by Cla-Val are warranted for one year from the date of shipment.

We will repair or replace defective material, free of charge, which is returned to our factory, transportation charges prepaid, provided that, after inspection, the material is found to have been defective at time of shipment. This warranty is expressly conditioned on the purchaser's giving Cla-Val immediate written notice upon discovery of the defect.

Components used by Cla-Val but manufactured by others, are warranted only to the extent of that manufacturer's guarantee.

This warranty shall not apply if the product has been altered or repaired by others, and Cla-Val shall make no allowance or credit for such repairs or alterations unless authorized in writing by Cla-Val.

Disclaimer of Warranties and Limitations of Liability

The foregoing warranty is exclusive and in lieu of all other warranties and representations, whether expressed, implied, oral or written, including but not limited to any implied warranties or merchantability or fitness for a particular purpose. All such other warranties and representations are hereby cancelled.

Cla-Val shall not be liable for any incidental or consequential loss, damage or expense arising directly or indirectly from the use of the product. Cla-Val shall not be liable for any damages or charges for labor or expense in making repairs or adjustments to the product. Cla-Val shall not be liable for any damages or charges sustained in the adaptation or use of its engineering data and services. No representative of Cla-Val may change any of the foregoing or assume any additional liability or responsibility in connection with the product. The liability of Cla-Val is limited to material replacements F.O.B. Costa Mesa, California.

TERMS OF SALE

Terms Of Sale

Acceptance Of Orders

All orders are subject to acceptance by our main office at Costa Mesa, California.

Credit Terms

Credit terms are net thirty (30) days from date of invoice.

Purchase Order Forms

Orders submitted on customer's own purchase order forms will be accepted only with the express understanding that no statements, clauses, or conditions contained in said order form will be binding on the Seller if they in any way modify the Seller's own terms and conditions of sales.

Product Changes

The right is reserved to make changes in pattern, design or materials when deemed necessary, without prior notice.

Prices

All prices are F.O.B. Costa Mesa, California unless expressly stated otherwise on our acknowledgement of the order. Prices are subject to change without notice. The prices at which any order is accepted are subject to adjustment to the Seller's price in effect at the time of shipment. Prices do not include sales, excise, municipal, state or any other Government taxes. Minimum order charge \$100.00

Responsibility

We will not be responsible for delays resulting from strikes, accidents, negligence of carriers, or other causes beyond our control. Also, we will not be liable for any unauthorized product alterations or charges accruing therefrom.

Risk

All goods are shipped at the risk of the purchaser after they have been delivered by us to the carrier. Claims for error, shortages, etc., must be made upon receipt of goods.

Export Shipments

Export shipments are subject to an additional charge for export packing.

Returned Goods

1. Customers must obtain written approval from Cla-Val prior to returning any material.
2. Cla-Val reserves the right to refuse the return of any products.
3. Products more than six (6) months old cannot be returned for credit.
4. Specially produced, non-standard models cannot be returned for credit.
5. Rubber goods such as diaphragms, discs, o-rings, etc., cannot be returned for credit, unless as part of an unopened vacuum sealed repair kit which is less than six months old.
6. Goods authorized for return are subject to a 35% (\$100 minimum) restocking charge and a service charge for inspection, reconditioning, replacement of rubber parts, retesting, repainting and repackaging as required.
7. Authorized returned goods must be packaged and shipped prepaid to Cla-Val, 1701 Placentia Avenue, Costa Mesa, California 92627.

Air Valve Test Stand



Global Headquarters Costa Mesa, CA



Global Locations



Global Headquarters

1701 Placentia Avenue
Costa Mesa, CA 92627
949-722-4800
800-942-6326
info@cla-val.com
www.cla-val.com

Western USA

800-942-6326

Central USA

800-533-8181

Eastern USA

800-451-3030

Cla-Val Canada

905-563-4963
sales@cla-val.ca

Cla-Val Latin America

52-(33)-80007565
info@cla-val.com
www.cla-val-latinamerica.com

Cla-Val Europe

Chemin Des Mesanges 1
CH-1032 Romanel/Lausanne
Switzerland
41-21-643-15-55
cla-val@cla-val.ch

Cla-Val United Kingdom

44-1892-514-400
info@cla-val.co.uk

Cla-Val France

33-4-72-25-92-93
cla-val@cla-val.fr

Cla-Val Asia Pacific

+ 64-3-9644860
info@cla-valpacific.com
www.cla-valpacific.com

Cla-Val UAE

+ 971 4 5667665
cla-val@cla-val.ch

Cla-Val Singapore

+65 91798177
wktan@cla-val.com

Cla-Val Thailand

+ 6681 4076118
info@cla-valpacific.com